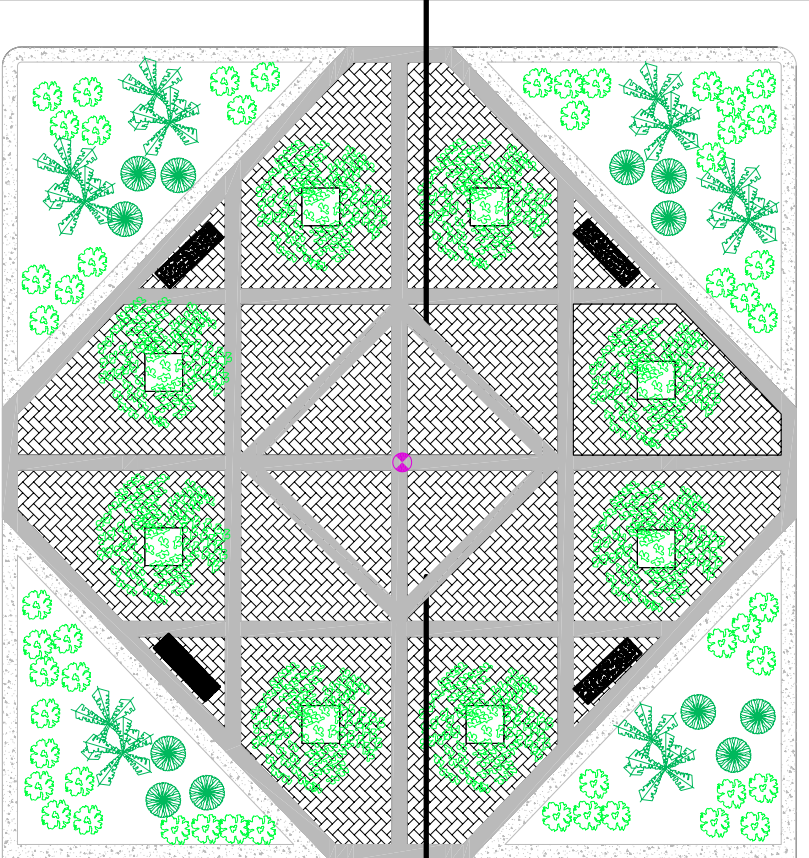


C/ SANTA TERESA DE AVILA

C/ EN PROYECTO

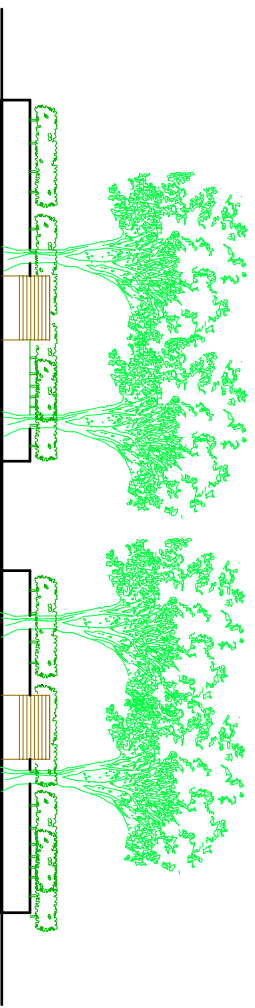






C/ LEPANTO

A

A'

SECCION A-A'



-  PUNTO DE LUZ
-  PAPELERA
-  BANCO DE HORMIGON CON RESPALDO
-  MURO DE HORMIGON BLANCO DE 40cm DE ALTURA